

Features

- Subminiature in SMT
- 7.5 mm seated height
- Distortion of only 0.015 %
- Vacuum encapsulated
- UL60950 certified
- RoHS compliant*

Applications

- Modems (V32)
- Laptop Computers
- Telecommunications
- Instrumentation

SM-LP-5001 Series - Surface Mount Line Matching Transformers

Electrical Specifications

Nominal Impedance.....	600 Ω
Turns Ratio.....	1:1
Insertion Loss.....	2.0 dB max. at 2 kHz
Frequency Response.....	±0.25 dB max. 200-4 kHz
Return Loss.....	24 dB min. 200-4 kHz*
Balance.....	.80 dB min.
Distortion.....	-76 dB max. @ 600 Hz, -10 dBm
Dielectric Strength.....	2000 VRMS for 1 min.
Insulation Resistance.....	100 MΩ @ 500 V
DC Resistance**	
Primary.....	115 Ω ±15 %
Secondary.....	115 Ω ±15 %
Shunt Inductance.....	3.8 H min.
Shunt Loss.....	7500 Ω min.
Leakage Inductance.....	6 mH typ. @ 1 kHz
Power Level.....	10 dBm
Operating Temperature.....	-20 °C to +85 °C
Storage Temperature.....	-40 °C to +85 °C

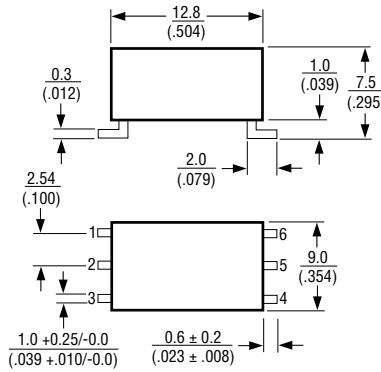
Materials

Terminal Plating.....Sn/Ag/Cu

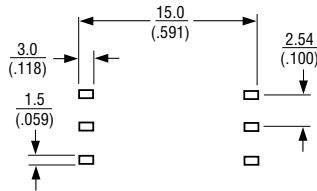
*For use with recommended circuit (BS6305 impedance Class A non-speech or Class B speech).

**SM-LP-5001 is symmetrical, meaning there is no real primary nor secondary winding.

Product Dimensions



Suggested PCB Layout



DIMENSIONS: $\frac{\text{MM}}{\text{(INCHES)}}$

LEAD COPLANARITY: $\frac{0.15}{(0.006)}$ MAX.

UNLESS OTHERWISE SPECIFIED, TOLERANCE: ± 0.25 (0.010) MAX.

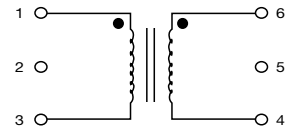
How To Order

Model SM-LP-5001

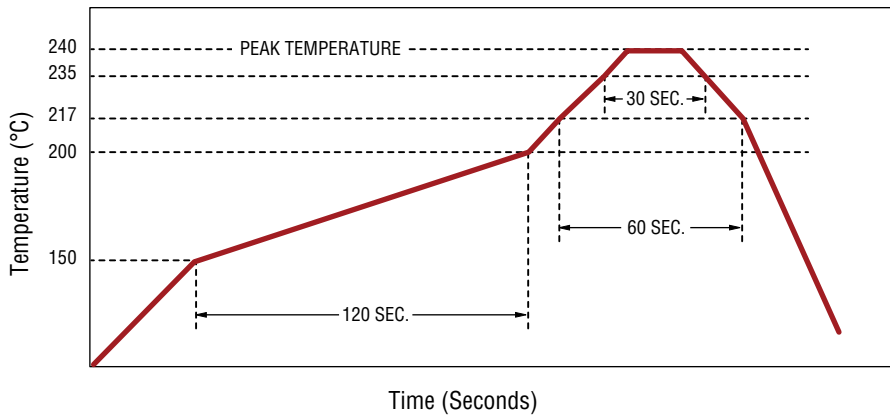
Packaging _____

Blank = Packaged in tubes
E = Tape and reel (400 pcs. per reel)

Schematic



Solder Profile



*RoHS Directive 2002/95/EC Jan. 27, 2003 including annex and RoHS Recast 2011/65/EU June 8, 2011.

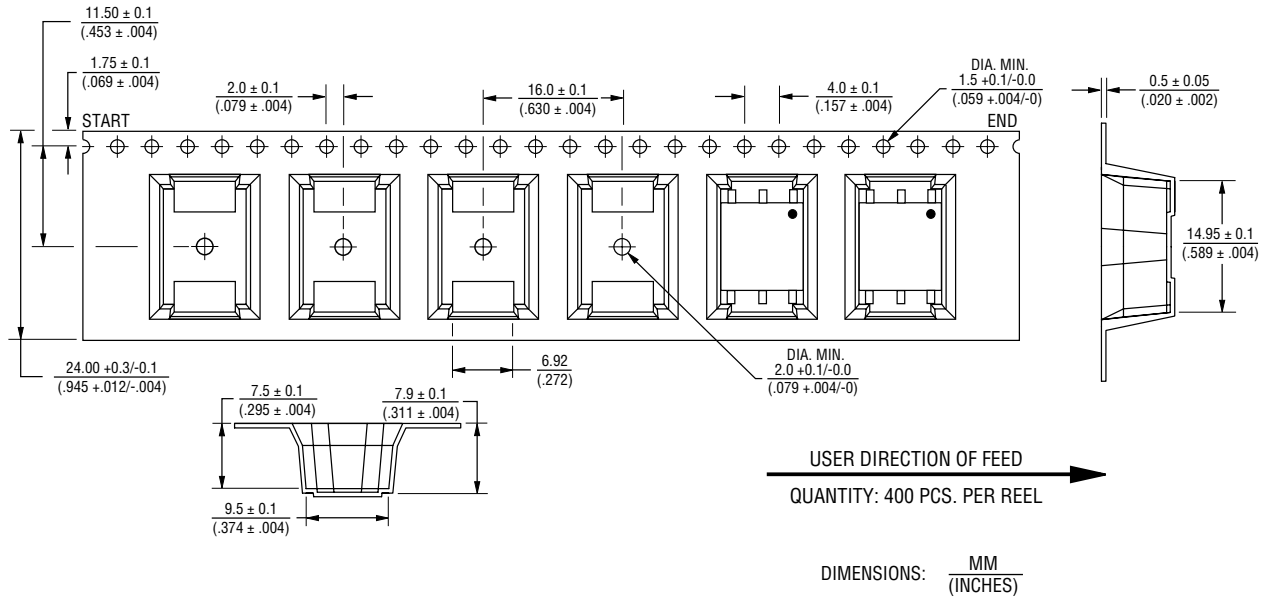
Specifications are subject to change without notice.

The device characteristics and parameters in this data sheet can and do vary in different applications and actual device performance may vary over time. Users should verify actual device performance in their specific applications.

SM-LP-5001 Series - Surface Mount Line Matching Transformers

BOURNS®

Packaging Specifications



REV. 05/17

Specifications are subject to change without notice.

The device characteristics and parameters in this data sheet can and do vary in different applications and actual device performance may vary over time. Users should verify actual device performance in their specific applications.